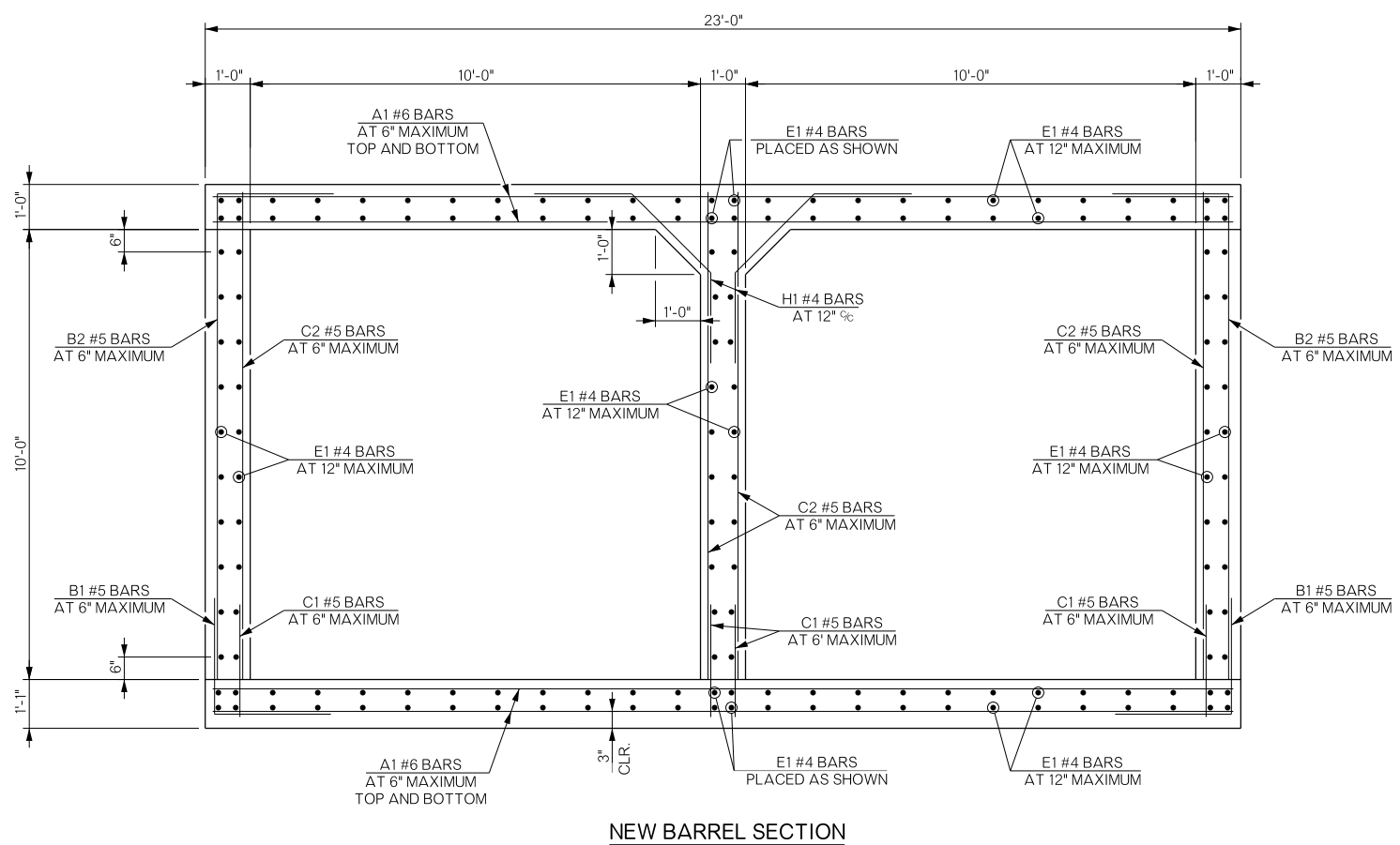
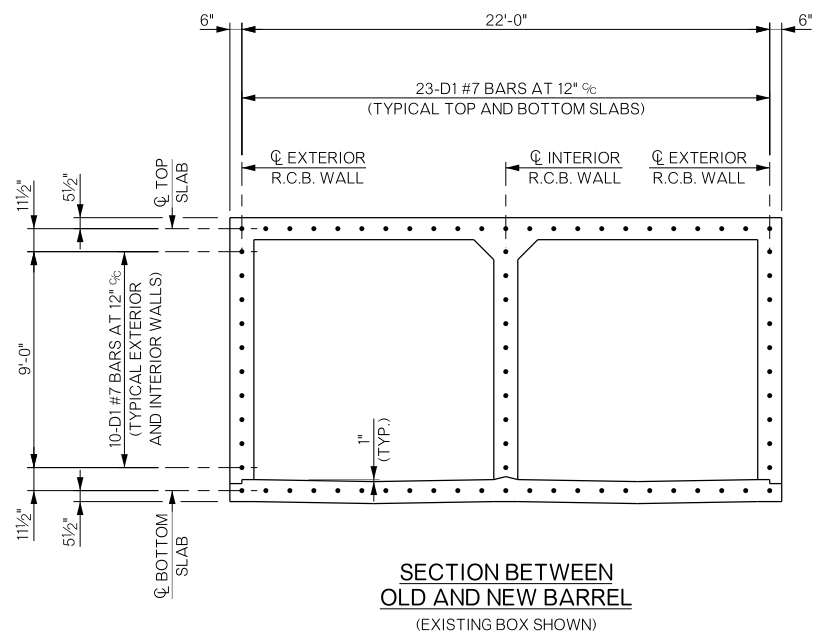


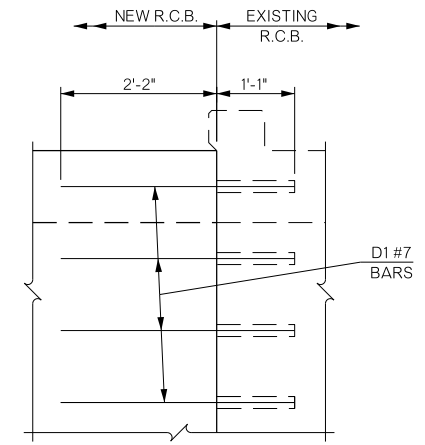
REVISIONS		
REV. NO.	DESCRIPTION	DATE



NEW BARREL SECTION

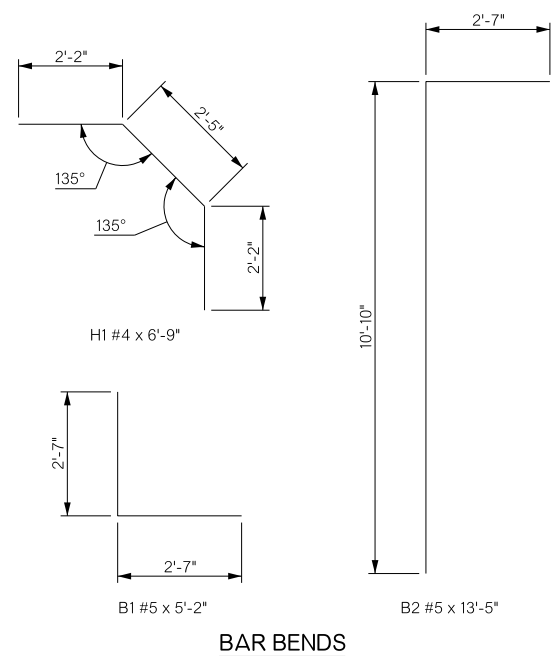


SECTION BETWEEN OLD AND NEW BARREL (EXISTING BOX SHOWN)

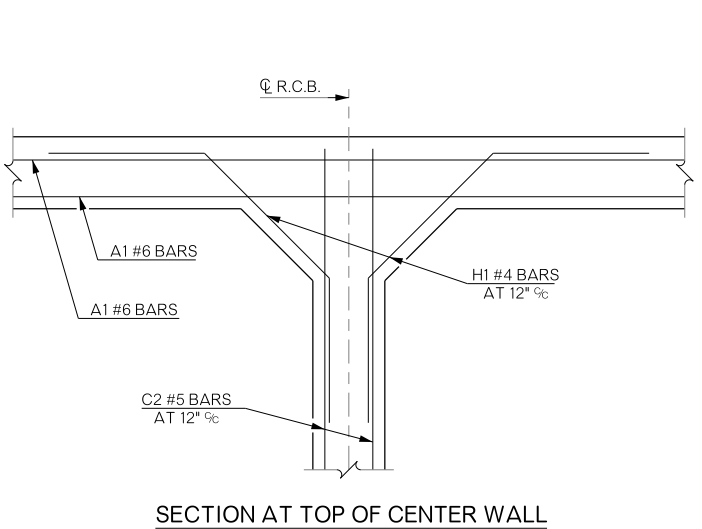


DETAIL AT NEW R.C.B. AND EXISTING R.C.B.

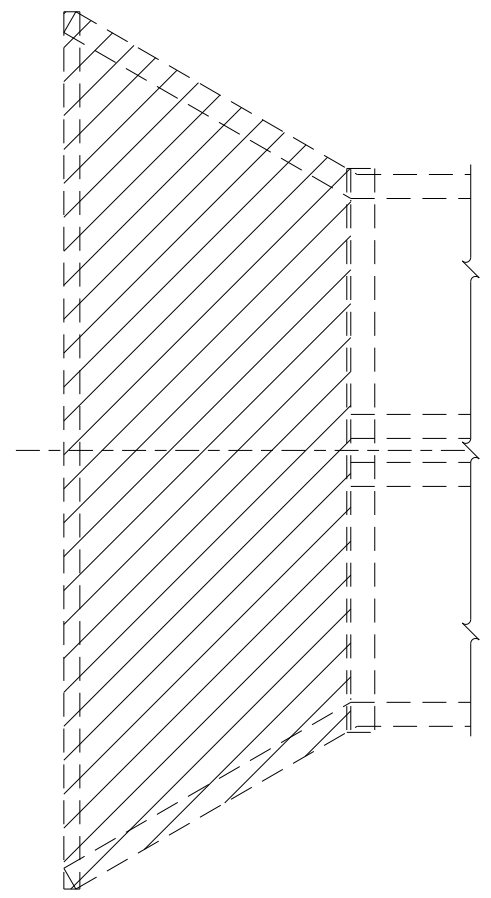
NOTE: DRILL INTO EXISTING CONCRETE, PLACE D1 BARS AND SECURE WITH ODOT APPROVED EPOXY.



BAR BENDS



SECTION AT TOP OF CENTER WALL



INLET END REMOVAL

BARREL EXTENSION BAR LIST					
GRADE 60 REINFORCING					
MARK	SIZE	NO.	FORM	LENGTH	REMARKS
A1	#6	345	STR.	22'-8"	
B1	#5	172	BNT.	5'-2"	
B2	#5	172	BNT.	13'-5"	
C1	#5	344	STR.	2'-6"	
C2	#5	344	STR.	10'-10"	
D1	#7	76	STR.	3'-3"	
E1	#4	164	STR.	42'-8"	
H1	#4	84	BNT.	6'-9"	

① FIELD CUT AS NECESSARY.

BARREL EXTENSION QUANTITIES		
ITEM	UNIT	TOTAL
CLASS AA CONCRETE	C.Y.	125.30
REINFORCING STEEL	LBS.	25,440.00

- GENERAL NOTES:
- ALL CONSTRUCTION AND MATERIAL REQUIREMENTS SHALL BE IN ACCORDANCE WITH THE 2009 OKLAHOMA STANDARD SPECIFICATIONS FOR HIGHWAY CONSTRUCTION.
 - ALL CONCRETE EDGES SHALL HAVE A 1/2" CHAMFER UNLESS OTHERWISE SHOWN OR NOTED. ALL CHAMFER STRIPS SHALL BE SIZED LUMBER.
 - ALL REINFORCING STEEL SHALL HAVE A 2" MINIMUM CLEAR COVER UNLESS OTHERWISE SHOWN.

BRIDGE "A" U.S.-277 OVER UNNAMED CREEK	COMANCHE COUNTY	Design: MLC 10/16
DETAILS OF R.C.B. EXTENSION		Detail: GLB 10/16
SHEET 1 OF 6		Check: DAH 04/17
STATE OF OKLAHOMA		Squad: HARJO
DEPARTMENT OF TRANSPORTATION		Engr: MOLLA-ESMAIL
JOB/PIECE NO. 27968(04)	SHEET NO. B002	